



CERTUS AST

Advanced Spreading Technology



- the safe way!

CERTUS AST

- auger spreader with low centre of gravity

CERTUS AST is Epoke's auger spreader and it is ideal for spreading salt and pre-wetted salt.

The application system in CERTUS AST models is design in accordance with the auger principle. The auger's design ensures that the hopper is emptied regularly and that the centre of gravity distribution is evened out. The result is improved driver safety.

CERTUS AST is well-designed, service-friendly spreader and extremely reliable because of its many design features that among other things, prevent blockages, bridging, etc.

Depending on the individual spreader specifications, it can be detached when full – up to a total weight of 17 tonnes. This significantly reduces response times when called out.

Everything on CERTUS AST is designed to solve the task optimally and in the shortest time possible without compromising environmental considerations or the safety of the driver and his surroundings.

CERTUS AST is GS and CE marked, and it has passed spreading and dosing tests B and C in accordance with DIN CEN/TS 15597-2 and industry association EUnited, respectively.



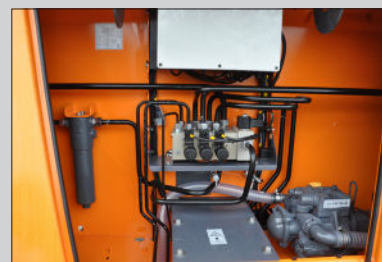
CERTUS AST can be precisely adjusted to suit the individual task using Epoke's wide range of control software.



The inspection ladder is positioned on the spreader arrangement for easy and safe movement.



The new side tank now has a capacity of up to 3500 l (small 2200 l, medium 2592 l, large 3500 l) and has been adapted to suit the machine's contours.



The engine compartment, which houses all of the control units is well shielded from the road, in accordance with the principle "well protected but easily accessible".



CERTUS AST BENEFITS:

- Highly effective spreader, ideal for spreading salt and pre-wetted salt.
- Extremely flexible
- Mutually adjusted capacity for the liquid tank and hopper, which ensures an optimal range when spreading pre-wetted salt.
- Spreading width of up to 12 m.
- Working speed of up to 60 km/h.
- Easily accessible operating locations behind the spreader within safe reach.
- Fast fitting to truck bed via four lashing eyes.
- Extremely reliable machine that is ideal for treating icy roads in Central Europe.
- Different unloading systems.
- Benefit of Epoke's expertise and many years of experience.

Operational mode



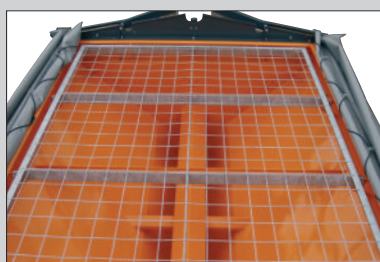
Hydraulics
SH – Vehicle hydraulics



Diesel engine
SE – Lombardini diesel engine



The diaphragm pump for pre-wetting is positioned in the engine compartment where it is easily accessible for inspection. The pump's operation is extremely precise, even after many years of operation.



When the new tarpaulin is fully tipped up, it leaves the hopper fully open.



Remote control options:
EpoMini X1 or EpoMaster X1.

Epoke Group

We produced our first sand and salt spreader in 1955, and since then we have solely focused on the development, production and sale of machines and equipment for the treatment of icy roads. Today, we are a global leader. In Denmark, sales are carried out by our own sales staff, while abroad our subsidiaries and 31 dealers manage sales.

Learn more at www.epoke.dk

Epoke A/S
Vejenvej 50
6600 Vejen
Denmark
www.epoke.dk

